



**Industrial Conveyor Specialists**

**Installation, Maintenance & Parts Manual  
For**

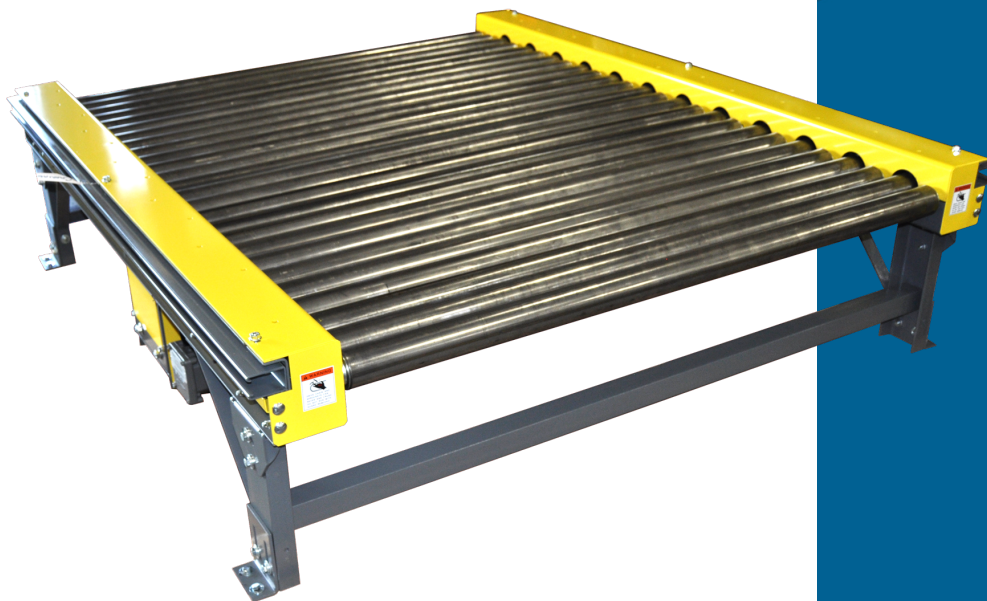
**MODEL 535**

**Chain Driven Live Roller Conveyor**

For Additional copies of this manual, please visit our website at  
[www.titanconveyors.com](http://www.titanconveyors.com)

Go to Info Center, Select the Maintenance Manual Tab  
and select the manual for your model conveyor  
or click on the link below.

<https://www.titanconveyors.com/info-center#823236-maintenance-manuals>



**Titan Conveyors  
735 Industrial Loop Road  
New London, WI 54961  
920-982-6600  
800-558-3616  
FAX 920-982-7750**

**E-mail: [sales@titanconveyors.com](mailto:sales@titanconveyors.com)  
Website: [www.titanconveyors.com](http://www.titanconveyors.com)**

**Serial No.**







Titan Zero Pressure Accumulators have been assembled and test run at the factory so very little adjustment is necessary after the units have been field assembled. The following information will help with initial installation of possible part replacement.

1. Along side the area where the conveyor is to be installed, layout the frame sections in their proper position according to the ordered description or refer to your copy of the approval drawing. If the frame placement has not been shown Titan recommends that the drive section be placed approximately in the center of the overall conveyor length. This is especially important for conveyors over 30 foot in length.

**TITAN CONVEYORS**  
 CONVEYOR: J3247  
 SECTION: 1  
 JOINT: 1

**TITAN CONVEYORS**  
 CONVEYOR: J3247  
 SECTION: 2  
 JOINT: 1

**NOTE! LOWER SECTION NUMBERS START AT THE CONVEYOR INFEED.**

- Layout a line on the floor to represent the centerline of the conveyor. As frame sections are bolted together make sure they remain centered on the line.
- Bolt together conveyor frames finger tight. Square frames and make sure all frames line up with adjacent sections before securing all bolts. The frames must be level for proper operation. Adjust the supports as necessary for leveling.
- Take off conveyor chain guards and with strands of chain provided, connect the end rollers from one frame section to another. See **FIGURE 3**.

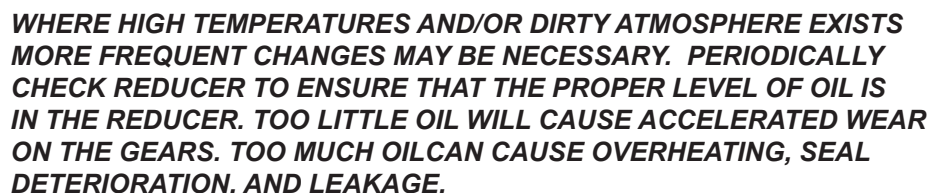












4. **LUBRICATION** - The equipment - made gears and bearings in our reducers require high-grade lubricants of the proper viscosity to maintain trouble-free performance. All standard reducers ordered from the factory are filled with ISO viscosity grade **Mobil Glygoyle 460 polyalkalene glycol (PAG)** lubricant. If oil needs to be added or changed, **ONLY** compatible polyglycol lubricants should be used. Contact the factory for more information.
5. **TEMPERATURE** - Most Titan units are supplied with worm gear reducers. These units may run at temperatures between 100 degrees to 200 degrees F. (Higher temperatures are especially common during start up). There is **NO NEED TO WORRY** unless temperatures exceed 200 degrees F.
6. **GENERAL MAINTENANCE** - Regular inspection to insure the reducer bolts and screws are tight, correct alignment of shaft and/or coupling, no major oil leaks, no excessive heating and no unusual vibration or noise will insure maximum life and performance of the reducer.

1. **LUBRICATION** - Bearings used on Titan conveyors are normally pre-lubed for life. If customer requested re-lube bearings are provided, the use of a #2 consistency lithium based grease is advised.

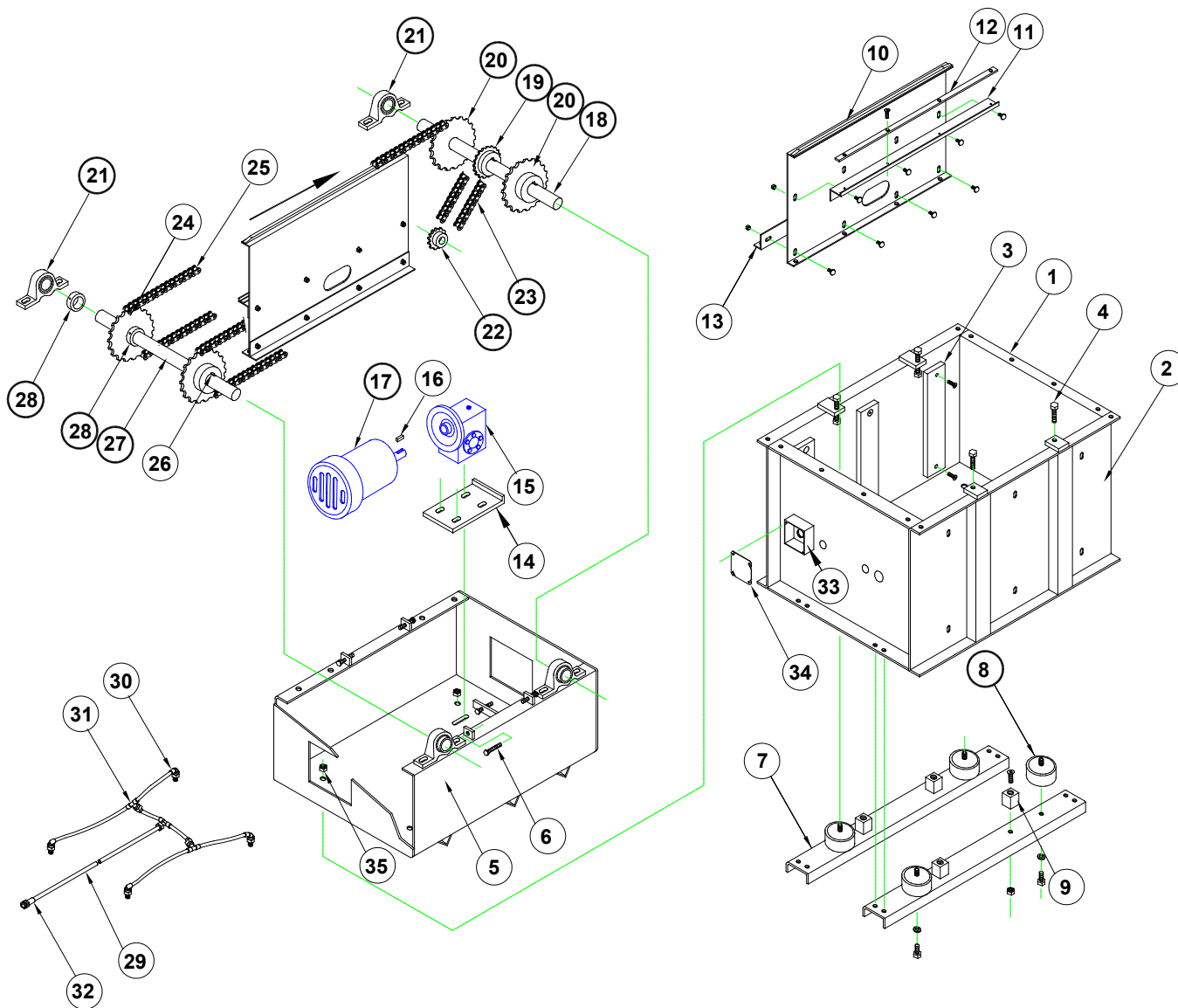
NORMAL DUTY	HEAVY DUTY
Texaco - Multifak #2	Sun - Prestige 742EP
Mobile - Mobilux #2	Exxon - Lidok #2EP
Amoco - Lithium MP	Arco - Litholene HEP2
Shell - Alvania #2	Shell - Alvania #2EP

- IF BEARING DOES NOT SLIDE ON EASILY, USE A SOFT METAL BAR TO TAP AGAINST THE INNER RACE TO ASSEMBLE.**

- GENERAL** - Set up a weekly check on all bearings to ensure they remain tightly bolted down, set screws remain fastened securely, and are properly lubricated.







- |                             |   |  |
|-----------------------------|---|--|
| 1. FRAME WELDMENT-SIDE      | 13. "T" FRAME SUPPORT ANGLE                 | 25. POP-UP TRANSFER CHAIN              |
| 2. FRAME WELDMENT-END       | 14. DRIVE BASE                              | 26. POP-UP SPROCKET KEY                |
| 3. WEAR PAD-BOX FRAME       | 15. • <b>REDUCER</b>                        | 27. • <b>POP-UP TAIL SHAFT</b>         |
| 4. UP STOP BOLT             | 16. MOTOR KEY                               | 28. • <b>IDLER SPK'T. SHAFT COLLAR</b> |
| 5. POP-UP BOX FRAME         | 17. • <b>MOTOR</b>                          | 29. AIR LINE                           |
| 6. PUSHER BOLT              | 18. • <b>POP-UP DRIVE SHAFT</b>             | 30. 90° ELBOW FITTING                  |
| 7. AIR BAG SUPPORT CHANNEL  | 19. • <b>DRIVEN SPROCKET</b>                | 31. FEMALE "T" FITTING                 |
| 8. • <b>AIR BAG</b>         | 20. • <b>POP-UP CHAIN SPRK'T. K &amp; S</b> | 32. BULKHEAD FITTING                   |
| 9. BOTTOM STOP              | 21. • <b>PILLOW BLOCK BEARING</b>           | 33. 4 x 4 "J" BOX                      |
| 10. POP-UP CHAIN TRACK      | 22. • <b>DRIVE SPROCKET</b>                 | 34. "J" BOX COVER                      |
| 11. CHAIN RETURN TRACK      | 23. • <b>ROLLER CHAIN</b>                   | 35. NUT-AIR BAG INLET STEM             |
| 12. WEAR STRIP-RETURN TRACK | 24. • <b>POP-UP CHAIN SPK'T. IDLER</b>      |  |